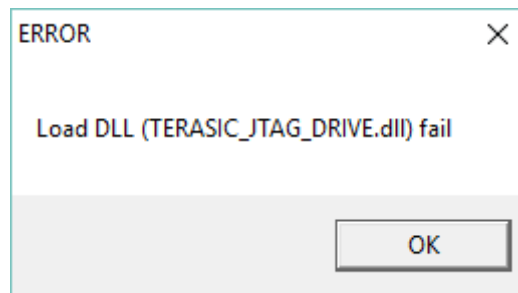
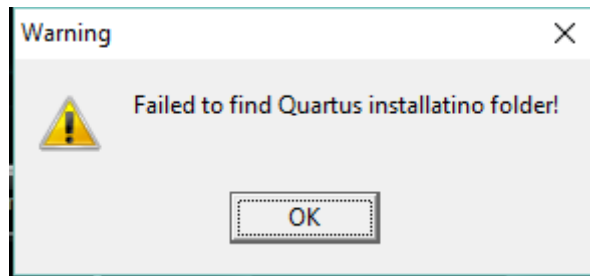


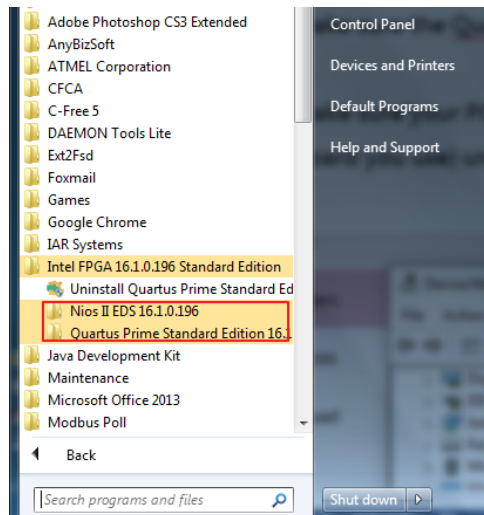
Running Control Panel under Quartus II 15.0 or later version

If you encounter the following problems when running the Control Panel under Quartus II 15.0 or later version,

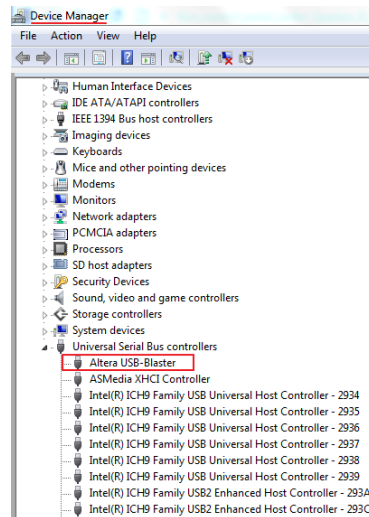


you need execute the following steps to make sure the Control Panel running successfully. In this guide, we use DE2-115 board and take the Quartus II 16.1 as an example:

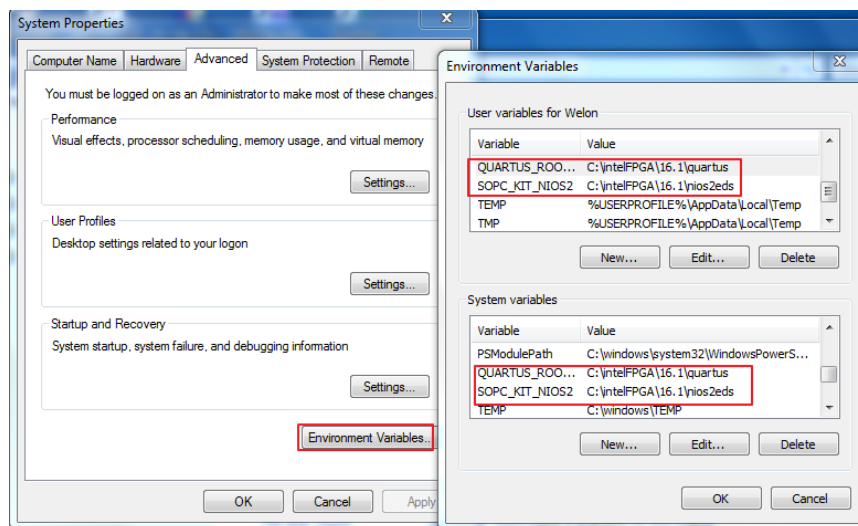
1. Please make sure the Quartus II v16.1 and Nios II v16.1 have been pre-installed on your host PC.



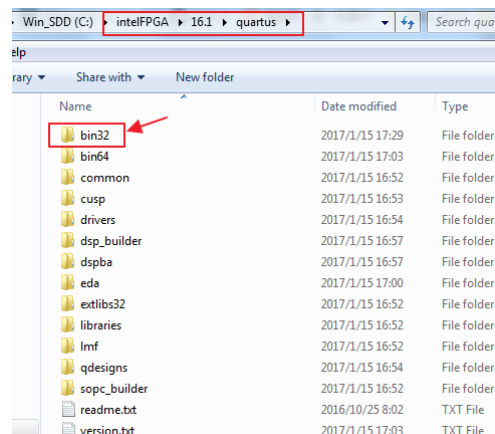
2. Please make sure your PC can detect the **Altera USB-Blaster** (or **Altera USB-Blaster II** , which is based on the board you use) under **Universal Serial Bus controllers**.



- Please make sure the corresponding environment variables (QUARTUS_ROOTDIR and SOPC_KIT_NIOS2) are directed to Quartus II 16.1 installation path as follows:



- Unzip and copy the bin32 (which can be downloaded from the link: <http://mail.terasic.com.cn/~wyzhou/bin32.zip>) folder to the C: intelFPGA\16.1\quartus folder in Quartus II software installation path.

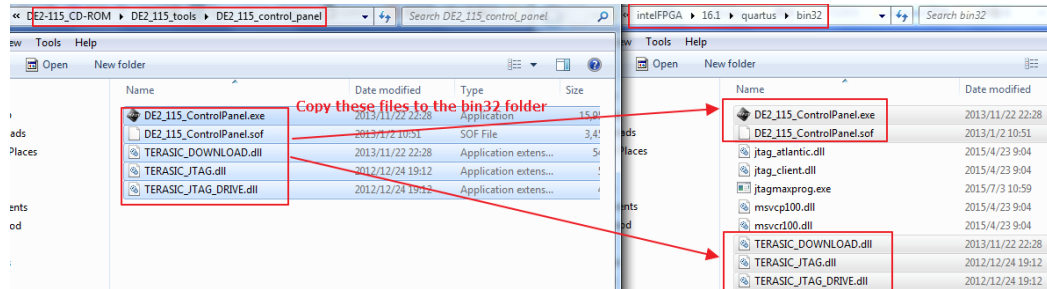


5. Open the Control Panel and it can run successfully.

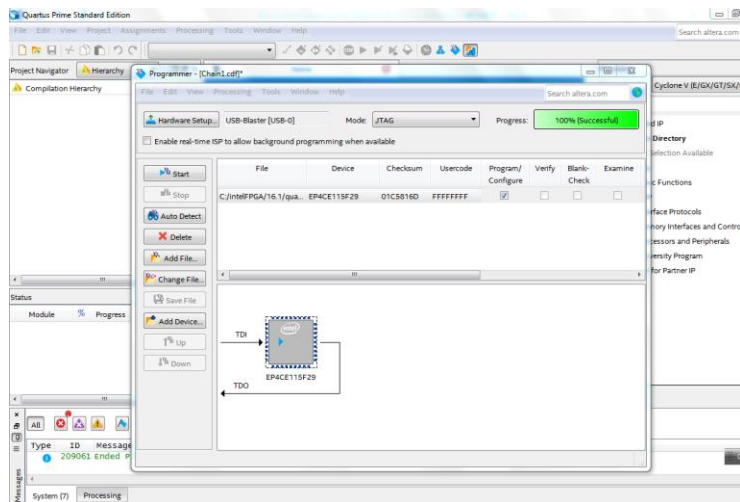


6. If the solution above is still failed, please continue to execute the steps below:

- Connect the board to your PC and power it up.
- Copy all the DE2_115 Control Panel files to the C: \intelFPGA\16.1\quartus folder,



- Manually download the DE2_115_ControlPanel.sof (Control Panel directory) under Quartus II Programmer tool.



- d. Re-open the Control Panel and the connection should be established automatically.

